



# ALTRAD GENERATION

HIRE & SALE



## FENCING, HOARDING & BARRIERS


PRODUCT GUIDE

IRELAND

2025/26

# Altrad Generation Hire & Sale

## Support for Construction & Industry



Altrad Generation is Ireland's leading supplier of: Scaffolding, Temporary Fencing, Light Access, Edge Protection, Safety Decking, Formwork, Falsework, and Groundworks for hire and sale.

### OUR **CUSTOMER COMMITMENT** IS TO DELIVER:



#### **BEST QUALITY**

We work closely with our suppliers to ensure consistent product quality every time. All our products are specified to meet or exceed statutory requirements, verified by our Quality Assurance team.



#### **BEST AVAILABILITY**

Our nationwide branch network, transport fleet and stock holding ensure we can supply your equipment needs. What, When and Where you need equipment.



#### **BEST PARTNERSHIP**

We can take care of all your equipment needs; supplemented by a full range of engineering, design, specification and business services. Our focus is to work together, supporting the growth of your business.



#### **BEST VALUE**

Our global supply chain, purchasing and lean business means we don't pass on unnecessary costs to you. We aim to provide consistently low prices and the best value when you buy or hire from us.

# Contents

## Fencing, Hoarding & Barriers



Fencing, Barriers, Hoarding & Water Filled Barriers.....4

Temporary Fencing .....5-6

Fencing Stability .....7-9

Fencing Accessories .....10-14

Temporary Steel Hoarding.....15

Hoarding Stability .....16-17

Hoarding Accessories .....18-20

Wind Resistance Calculator .....21

Pedestrian Barriers.....22-25

Traffic Management Barriers.....26-30



## Fencing, Hoarding, Barriers & Water Filled Barriers



Altrad Generation is the largest supplier of scaffolding products in Ireland. We got to that position through a combination of providing quality products and service backed up by a knowledgeable team.

The next part of our progression was to go into the temporary fencing market with the same approach and we quickly became one of the biggest providers of this product in Ireland.

To maintain our position and better service our customers on a national basis we expanded our range to include complementary products. Since doing this we are now one of the biggest suppliers of non mechanical plant including temporary fencing, pedestrian barriers, water filled barriers, hoarding, acoustic barriers, edge protection and groundworks products. The Altrad Generation branch network provides Ireland wide local coverage. Supported by a fleet of four 26 ton commercial vehicles with Hiab cranes for easy on/off loading.

Our expertise and knowledge leaves us confident that we can efficiently supply the best products for your requirements making sure that you receive the best quality items at the right place, right time every time.

Altrad Generation are one of the biggest providers of Temporary Fencing and can offer the most effective and economic solutions for Temporary Fencing and Barriers for site boundaries. Easily locking together, both fencing and barriers can be quickly erected on site to provide a safe and secure temporary boundary. A full range of additional components can also be supplied; such as pedestrian and vehicle gates extensions and stabilisers.

All our fence panels are manufactured using SMARTWELD technology meaning that they are stronger than ever and have 100% product quality and traceability. This method of manufacture provides a 360° weld at the joins, every panel has these automatically tested to ensure that the frame can withstand a load of 500kg and only if it passes this test will it be given a batch code. However it is not only the strength of the frame that makes these panels stand out, these panels offer maximum strength as the mesh is pulled taut prior to welding for full rigidity. This process not only that the best fencing reaches you but also means that you can standardize your products. Altrad Generation fence panels fully comply with the recommendations of the guidance note HS(G)151 - Protecting the Public.



# Temporary Fencing

## Square Top Anti-Climb Panel

The Square Top Anti-Climb Panel is available in heavy duty, light duty, and with corner brackets. Full HSG151 compliant panel with anti-climb mesh, low profile and lightweight making it easy to stack and transport. This panel has 100% product quality and traceability, with every panel tested, passed and provided with a unique ID in the factory.



Code	Description	Length	Height	Width	Weight
TF0140	STD Square Top Panel	3450mm	2025mm	-	13.60kg
TF0240	HD Square Top Panel	3450mm	2025mm	-	15.60kg

## HD Anti Climb Panel

A strong "industry standard" round top panel with Anti-Climb Mesh Fence Panel where security is at a premium. Fully HSG151 compliant to ensure on-site product compliance and safety. Strength, security and longevity are delivered through Smartweld technology. A 360° weld on 38mm tube with fitted corner webs. 100% product quality and traceability, with every panel tested, passed and provided with a unique ID in the factory.



Code	Description	Length	Height	Width	Weight
TF0850	HD Anti Climb Panel	3450mm	2000mm	-	14.00kg



# Temporary Fencing

## HD+ Anti Climb Panel

The heaviest and strongest round top panel with Anti-Climb Mesh Fence Panel where security is at a premium. Fully HSG151 compliant to ensure on-site product compliance and safety. Strength, security and longevity are delivered through Smartweld technology. A 360° weld on 38mm tube with fitted corner webs. This panel has 100% product quality and traceability, with every panel tested, passed and provided with a unique ID in the factory. Every single wire is welded to the frame meaning 174 individual welds.



Code	Description	Length	Height	Width	Weight
TF0860	HD+ Anti Climb Panel	3450mm	2000mm	-	16.00kg

## Round Top Anti-Climb Panel Center Bar



Code	Description	Length	Height	Width	Weight
TF0800	Round Top Anti Climb Panel	3450mm	2000mm	-	13.90kg



# Fencing Stability



Description
Fence Stabiliser (HSG151) Small
Stabiliser Pin
Standard Black Rubber Foot



Description
Fence Stabiliser
Stabiliser Pin
Standard Black Rubber Foot



Description
Fence Stabiliser
2 x Standard Black Rubber Foot



Description
Zero Trip Stabiliser Base
Zero Trip Cranked Stabiliser



# Fencing Stability



Description
Hoarding Stabiliser
Rear Block Tray
Standard Black Rubber Foot



Description
Hoarding Stabiliser
Rear Block Tray
Stabiliser Brace
Standard Black Rubber Foot



Description
Fence Stabiliser (HSG151) Small
Stabiliser Pin
50kg Ballast Block
Standard Black Rubber Foot



Description
Ballast Block Stabiliser
2 x 50kg Ballast Block
Standard Black Rubber Foot





# Fencing Stability



Description
Small Connecting Tube
Windbreaker Loading Tray
Windbreaker Small Footprint Stabiliser
Windbreaker Zero Trip Foot



Description
Hoarding Stabiliser
Windbreaker Loading Tray
Windbreaker Connecting Tube
Windbreaker Zero Trip Foot



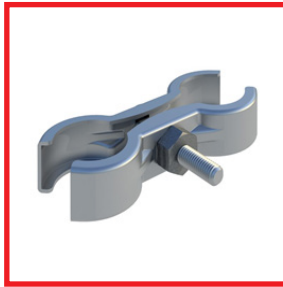
Description
Fence Stabiliser (HSG151) Small
Block Cradle
Standard Black Rubber Foot



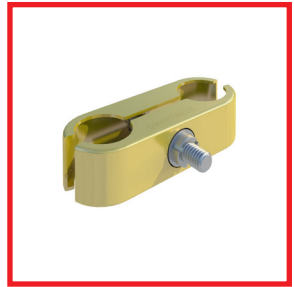
## Fencing Accessories



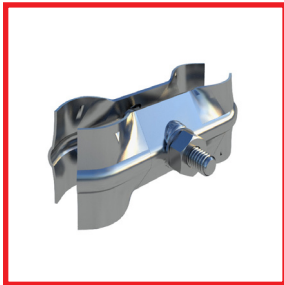
<b>Desc.</b>	Standard Black Rubber Foot
<b>Code</b>	<b>TF0300</b>



<b>Desc.</b>	Gripper Coupler Lite
<b>Code</b>	<b>TF0801</b>



<b>Desc.</b>	HD Lockable Gripper Coupler
<b>Code</b>	<b>TF1200</b>



<b>Desc.</b>	Fence Coupler
<b>Code</b>	<b>TF0200</b>



<b>Desc.</b>	Gripper Coupler
<b>Code</b>	<b>TF0220</b>



<b>Desc.</b>	Anti-Lift Device
<b>Code</b>	<b>TF0500</b>



<b>Desc.</b>	Ballast Block Lifter
<b>Code</b>	<b>TF0325</b>



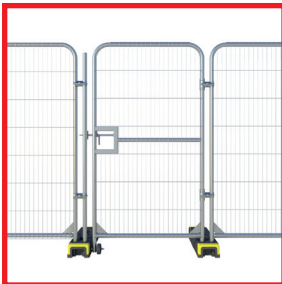
<b>Desc.</b>	Lockable Coupler Spanner
<b>Code</b>	<b>TF1300</b>



<b>Desc.</b>	Reflective Strip
<b>Code</b>	<b>TF0630</b>



# Fencing Accessories



<b>Desc.</b>	1m Anti-Climb RT Ped Gate
<b>Code</b>	<b>TF0150</b>



<b>Desc.</b>	4.2m Anti-Climb RT Vehicle Gate
<b>Code</b>	<b>TF0162</b>



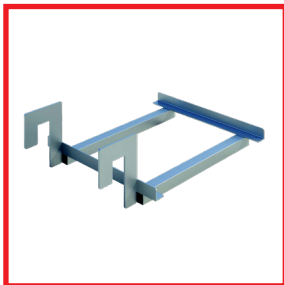
<b>Desc.</b>	Fence Stillage
<b>Code</b>	<b>TF0613</b>



<b>Desc.</b>	Stabiliser (HSG151) Small
<b>Code</b>	<b>TF0606</b>



<b>Desc.</b>	Fence Stabiliser
<b>Code</b>	<b>TF0600</b>



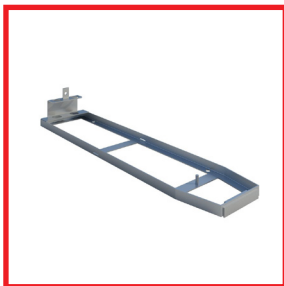
<b>Desc.</b>	Block Cradle
<b>Code</b>	<b>TF0618</b>



<b>Desc.</b>	Stabiliser Pin
<b>Code</b>	<b>TF0605</b>



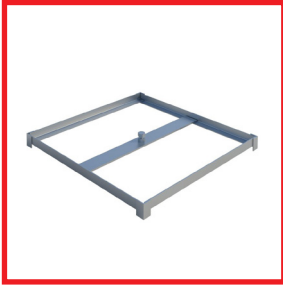
<b>Desc.</b>	Ballast Block Stabiliser
<b>Code</b>	<b>TF0322</b>



<b>Desc.</b>	Zero Trip Stabiliser Base
<b>Code</b>	<b>TF0622</b>



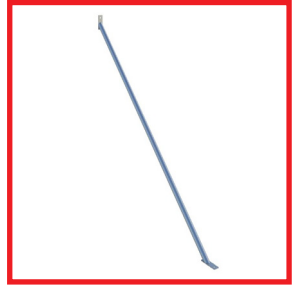
## Fencing Accessories



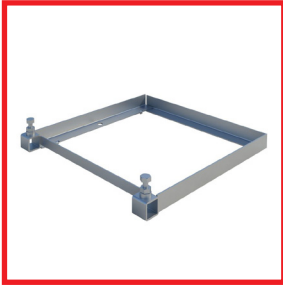
<b>Desc.</b>	Hoarding Rear Block Tray
<b>Code</b>	<b>TF1010</b>



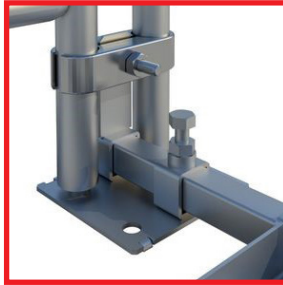
<b>Desc.</b>	Hoarding Stabiliser Brace
<b>Code</b>	<b>TF0621</b>



<b>Desc.</b>	Hoarding Stabiliser
<b>Code</b>	<b>TF0601</b>



<b>Desc.</b>	Windbreaker Loading Tray
<b>Code</b>	<b>TF0617</b>



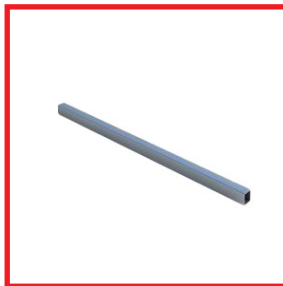
<b>Desc.</b>	Windbreaker Zero Trip Foot
<b>Code</b>	<b>TF0615</b>



<b>Desc.</b>	Windbreaker Connecting Tube
<b>Code</b>	<b>TF0616</b>



<b>Desc.</b>	Windbreaker Small Footprint Stabiliser
<b>Code</b>	<b>TF0614</b>



<b>Desc.</b>	Windbreaker Small Connecting Tube
<b>Code</b>	<b>TF0619</b>



<b>Desc.</b>	50kg Gen Ballast Block
<b>Code</b>	<b>TF0321</b>



# Fencing Accessories



<b>Desc.</b>	Traffic Cone
<b>Code</b>	<b>RNOLAN</b>

## Acoustic Barrier System

Water and fire proof PVC and foam acoustic barriers that reduces site noise by 30 decibels. Increasingly important on sites to improve worker welfare and maintain community relations. Commonly used in highly populated areas where noise and proximity will cause issues and complaints i.e. city centre sites, late night work, on rail track maintenance and road works. The lightweight and roll up design makes it easy to store, transport and construct by attaching to any site fencing or scaffolding. Reflective strips for night time visibility and easy to add signage and branding. BS EN 60529 Compliant. Fixing kits available. (Use 3 Acoustic Barriers per 3.5m wide fence) Corporate branding is also available.



<b>Code</b>	<b>Description</b>	<b>Length</b>	<b>Height</b>	<b>Width</b>	<b>Weight</b>
<b>NGARDZ</b>	Echo Barrier	1200mm	2000mm	-	6.00kg



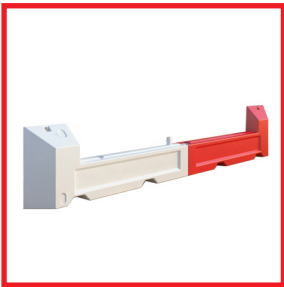
# Fencing Accessories

## Altrad Generation Slot Block

The Slot Block is a water filled stability system that can accommodate an industry standard 3.5m × 2.0m mesh panel.

This space saving system has a width that is less than a standard fence foot so maximizes inner working space. Slot Block has minimum trip hazard and is flush fitting to the floor, making it ideal for schools, inner city contracts or public footpaths. It can rotate at 45 degrees to provide flexibility when setting up.

Accessories include 1250 × 150 reflective strips and lights can be added for increased visibility. (2 x 1750m sections required for use with standard 3.5m size fence panel).



Code	Description	Length	Height	Width	Weight	W.Ballast
SLOT01	Slot Block	3500mm	600mm	380mm	14.00kg	320.00kg



# Temporary Steel Hoarding



This is a portable steel hoarding system which combines the flexibility of temporary fencing with the strength & security of hoarding. These hoarding panels are available in 2 height sizes, 2.0m & 2.4m, albeit the most popular size is 2.0m. The panels come in a plain galvanized finish as standard but company livery can be achieved by painting, powder coating and/or stripes. Ideal solution to prevent unauthorised access, perimeter fencing, privacy requirements, and protection of the public and Altrad Generation provides full advice and the range of accessories to ensure the solid panelling is stable in windy site conditions.

## Hoarding Panel



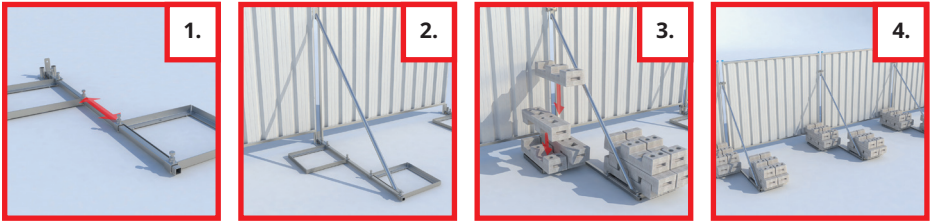
Code	Description	Length	Height	Width	Weight
<b>TF1020</b>	2.0 Hoarding Panel	2140mm	1980mm	0.5mm	25.30kg
<b>TF0165</b>	2.4 Hoarding Panel	2140mm	2380mm	0.5mm	30.00kg



# Hoarding Stability

## Altrad Generation Windbreaker System

Altrad Generation provide a free site wind assessment to ensure you get the right fencing and hoarding for your site. Our range of products, expert support and wind portal analysis provides will identify the right wind-breaker and stability systems for your needs.



Standard Windbreaker System

Description
Hoarding Stabiliser
Windbreaker Loading Tray
Windbreaker Connecting Tube
Windbreaker Zero Trip Foot



Compact Windbreaker System

Description
Small Connecting Tube
Windbreaker Loading Tray
Windbreaker Small Footprint Stabiliser
Windbreaker Zero Trip Foot





# Hoarding Stability



Description
Big Foot Tubular Base
Big Foot Stabiliser HD
Big Foot Loading Tray
Big Foot Kentledge Block (780kg)



Description
Big Foot Tubular Base
Big Foot Small Footprint Stabiliser
Big Foot Loading Tray
Big Foot Kentledge Block (390kg)



Description
Hoarding Stabiliser
Rear Block Tray
Stabiliser Brace
Anti-Lift Device
Standard Black Rubber Foot



## Hoarding Accessories



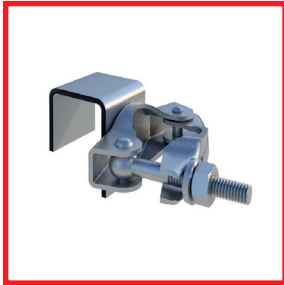
<b>Desc.</b>	Standard Black Rubber Foot
<b>Code</b>	<b>TF0300</b>



<b>Desc.</b>	Gripper Coupler
<b>Code</b>	<b>TF0220</b>



<b>Desc.</b>	Anti-Lift Device
<b>Code</b>	<b>TF0500</b>



<b>Desc.</b>	Hoarding to Scaffold Coupler
<b>Code</b>	<b>TF0230</b>



<b>Desc.</b>	Big Foot Block Tray
<b>Code</b>	<b>TF0103</b>



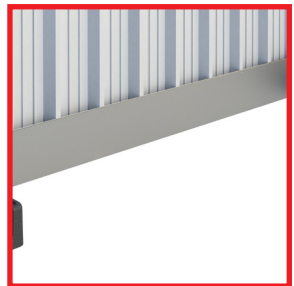
<b>Desc.</b>	Vehicle Gate
<b>Code</b>	<b>TF0163</b>



<b>Desc.</b>	Pedestrian Gate
<b>Code</b>	<b>TF0161</b>



<b>Desc.</b>	Galvanised Infill Sheet
<b>Code</b>	<b>TF1040</b>



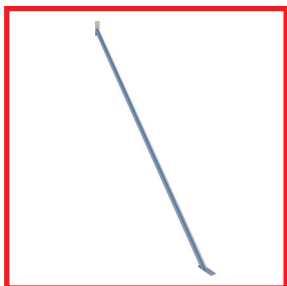
<b>Desc.</b>	Galvanised Infill Skirt
<b>Code</b>	<b>TF1042</b>



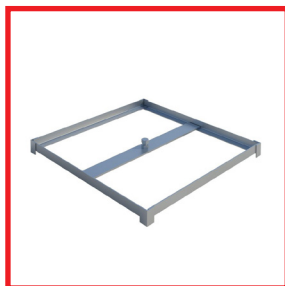
## Hoarding Accessories



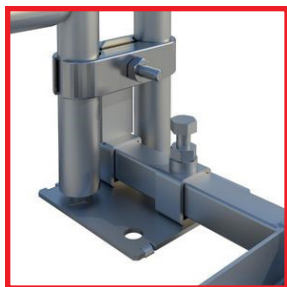
<b>Desc.</b>	Hoarding Stabiliser Brace
<b>Code</b>	<b>TF0621</b>



<b>Desc.</b>	Hoarding Stabiliser
<b>Code</b>	<b>TF0601</b>



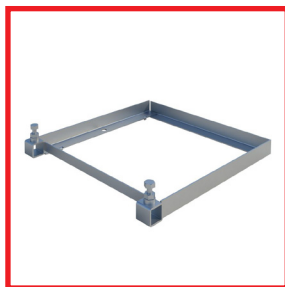
<b>Desc.</b>	Hoarding Rear Block Tray
<b>Code</b>	<b>TF1010</b>



<b>Desc.</b>	Windbreaker Zero Trip Foot
<b>Code</b>	<b>TF0615</b>



<b>Desc.</b>	Windbreaker Connecting Tube
<b>Code</b>	<b>TF0616</b>



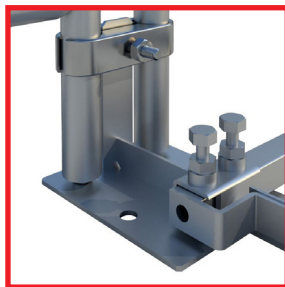
<b>Desc.</b>	Windbreaker Loading Tray
<b>Code</b>	<b>TF0617</b>



<b>Desc.</b>	Windbreaker Small Footprint Stabiliser
<b>Code</b>	<b>TF0614</b>



<b>Desc.</b>	Windbreaker Small Connecting Tube
<b>Code</b>	<b>TF0619</b>



<b>Desc.</b>	Big Foot Tubular Spigot Base
<b>Code</b>	<b>TF0105</b>



# Hoarding Accessories



Desc.	Big Foot Stabiliser HD
Code	TF0104



Desc.	Big Foot 390kg Kentledge Block
Code	TF0102



Desc.	Big Foot 780kg Kentledge Block
Code	TF0107



# Wind Resistance Calculator

The Altrad Generation Wind Resistance Calculator service is a technical support resource specifically designed to help sites meet the requirements of BS5975 'Temporary Works Design' relative to temporary fencing and hoarding installations.

The service provides Altrad Generation customers with guidance on the expected wind resistance capabilities of a range of freestanding fence panel products with various stability systems to help them choose the right product for safety and security for their site.

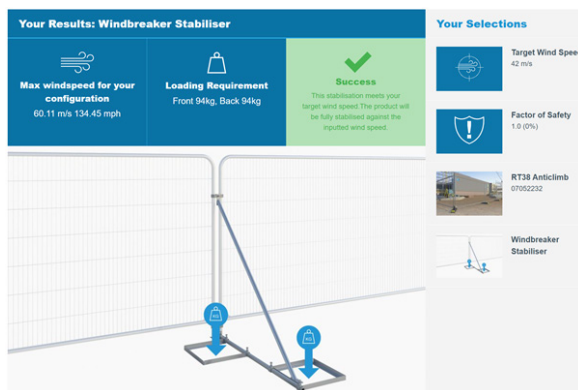
Before using the Calculator or requesting advice it is advisable to obtain your own site specific information such as prevailing wind speeds, direction of wind, location (coastal, inner city or exposed sites are more prone to the elements for example) and if a factor of safety is stipulated.

Once the site specific wind speed has been obtained you can then configure a panel and stabilisation system to match those conditions. The resistance values are approximations and are for general guidance only.

The readings in this document refer to zone D which relates to 4th fence panel or 5th hoarding panel in a continuous run. The results are based on the chosen stability method to be installed on every panel.

Note that wind-load calculation data is based on Altrad Generation product specifications and as such are only applicable to these products sourced from Altrad Generation either for hire or sale. Market alternatives may not give the same result as these readings so this document must not be used as reference to competitors products.

Please contact a member of our team, they will be able to assist in advice on which systems suit your site & provide the corresponding generic wind loading calculation.





## Pedestrian Barriers

### Fixed Leg Barrier

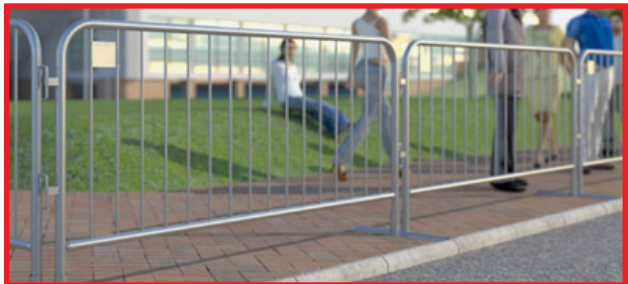
Altrad Generation barriers have a strengthening bar between the legs which stop them splaying and improves longevity. The fixed feet have a domed finish to make them crush resistant and safer should they be pushed over. Each barrier has 2 locking hooks to stop unauthorised dismantling on site. This barrier is supplied in a standard galvanised finish, but can be powder coated in any RAL/ BS colour at an additional cost. For windloading a 16kg ballast block can be used.



Code	Description	Length	Height	Width	Weight
<b>CCB203</b>	Fixed Leg Barrier Galv	2262mm	1100mm	-	10.60kg
<b>CCB220</b>	Fixed Leg Barrier Red	2262mm	1100mm	-	10.60kg
<b>CCB209</b>	Fixed Leg Barrier White	2262mm	1100mm	-	10.60kg

### Bar Barrier

This barrier is a galvanised steel loose Bar Barrier can be used with either a double flat foot to reduce trip or a thermo plastic foot. This barrier is ideal for easy transportation and storage. Strong and versatile, galvanised and fully interlocking.



Code	Description	Length	Height	Width	Weight
<b>CCB300</b>	Bar Barrier	2300mm	1100mm	-	10.60kg



# Pedestrian Barriers

## Fixed Leg Walkthrough (Available w/wo gate)

Provides a safe access point for pedestrians in conjunction with Crowd Control Barriers. It is interchangeable with the 2.3m Fixed Leg Bar Barrier & supplied in red for easy visibility. For better safety on site it is recommended that these are supplied with the self closing gate.

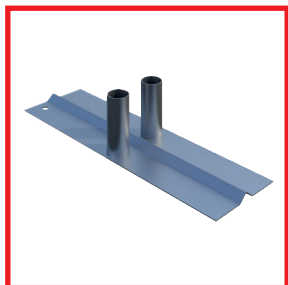


Code	Description	Length	Height	Width	Weight
CCB201	Fixed Leg WT	2266mm	2143mm	-	12.90kg
CCB202	Fixed Leg WT & Gate	2266mm	2143mm	-	18.70kg

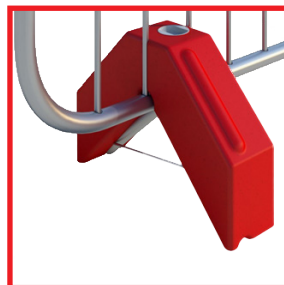
## Related Products



Desc.	Standard Black Rubber Foot
Code	TF0300



Desc.	Double Metal Foot
Code	TF0900



Desc.	16kg Barrier Ballast Block
Code	CCB240



# Pedestrian Barriers

## Chapter 8 Barriers

Complies with BS7818 making it ideal for event management and pedestrian control. Linking system design creates secure joints on even or uneven terrain. Constructed from tough, high density polythene (HDPE). Designed for secure stacking and easy transportation. Compliant with Chapter 8 street works. Available with Anti-Trip foot options. \*Other colours available on request, company branding also available.

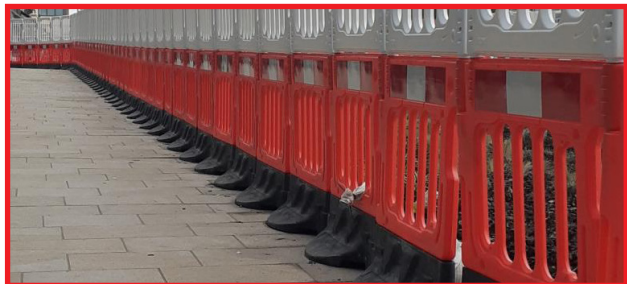
### Gate & Firmus Barrier



Code	Description	Length	Height	Width	Weight
<b>FRONT1</b>	Gate Barrier	2000mm	1000mm	-	9.00kg
<b>AVALON</b>	Firmus Barrier (Sale Only)	2000mm	1075mm	-	-

### Altrad Generation WonderWall™

The Altrad Generation WonderWall™ is a heavy duty barrier system that complies with Chapter 8 street works & reflectivity requirements of BSEN12899-1. This robust barrier gives stability in high winds without the need for extra ballast. It creates a safer working environment when Barrier is deployed near the road side, or excavations on site. Quick & easy to install ease by one person. To increase the height of this system to 2metres the Double Top can be added to this product.



Code	Description	Length	Height	Width	Weight	W.Ballast
<b>SW0001</b>	Wonder Wall	1140mm	1000mm	520mm	25.00kg	-





# Pedestrian Barriers

## Altrad Generation Double Top

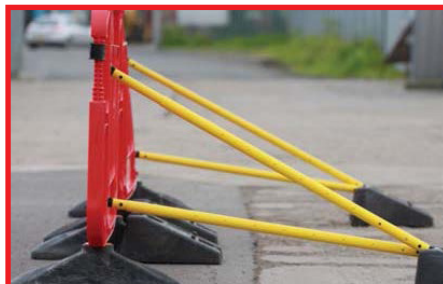
The Altrad Generation Double Top is a multi-use barrier top designed for use on the WonderWall™ and Buddha barrier systems. Simple Hook & Eye connectivity removes the need for additional brackets associated with conventional metal tops. The Double Top is lightweight, durable and has the option for reflective on the spindles.



Code	Description	Length	Height	Width	Weight	W.Ballast
<b>T2MDBL</b>	Double Top	1000mm	2065mm	520mm	25.50kg	-

## Titan Barrier

The recognised and well established stacking barrier from Altrad Generation it has all the usual advantages of standard stackable systems but in addition provides many unique features. The barrier has undergone modifications to further improve longevity and to meet the proposed NRSWA changes effecting wind stability as set out in BS8442 (when erected and assembled correctly).



Code	Description	Length	Height	Width	Weight
<b>T2MBSH</b>	Titan Barrier 1.5m	1530mm	1005mm	-	13.50kg
<b>T2MBSO</b>	Titan Barrier 2.0m	1932mm	1005mm	-	14.60kg



## Traffic Management Barriers

Altrad Generation is the largest supplier of access, scaffolding, temporary fencing and non mechanical plant equipment across Ireland. Since adding traffic management products into our range the demand has grown extensively and we offer all types of water filled & self weighted solutions. The range varies from low level traffic separators, intermediary products that can achieve a greater height (similar to temporary fencing) heavy duty barriers and even crash tested products. All temporary traffic barriers must be able to withstand three different classes of wind speeds with the use of a ballast. The standard BS 8442:2015 states the three classes as the following:

Class A: 26.3 m/s (58 mph)

Class B: 17.6 m/s (39 mph)

Class C: 8.7 m/s (19 mph)

Where MIRA is stated this is a physical not theoretical test where the barrier system was filled with water and tested under strict conditions at the Full Scale Wind Tunnel at MIRA to determine at which wind speeds the barrier can withstand. If the barrier is to be a crash tested product it must be free standing at 50Mph (80Kmph) to conform with BS EN1317-N. One piece moulded crash barrier system that will bring a car to a controlled stop.

### Evo Barrier

Versatile and variable height barrier system that creates a solid wall when linked together for traffic demarcation and pedestrian safety. The Evo design allows the 2 different sizes to interlock and deliver barrier protection at variable heights. Fully stackable to make them easy to transport and store with a high barrier to pallet ratio and full load quantities. Constructed in UV stabilized prime polyethylene and water/sand filled to provide more stability where longer term use is required. Fast and easy to assemble on site with no additional lifting equipment required.



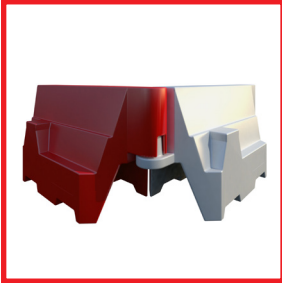
Code	Description	Length	Height	Width	Weight	W.Ballast
<b>CCB600</b>	1.0m Evo Barrier	1000mm	555mm	400mm	6.00kg	26.00kg
<b>CCB650</b>	1.5m Evo Barrier	1500mm	555mm	400mm	10.00kg	30.00kg
<b>EVO002</b>	1.0m Evo Mesh Top	-	-	-	-	-
<b>EVO003</b>	1.5m Evo Mesh Top	-	-	-	-	-



# Traffic Management Barriers

## Pyramid Barrier

This traffic separator comes in red and white finish as standard but can be produced in corporate colours if required, dependent upon quantity. This low level barrier is unique in the way that it rotates a full 90 degrees without the need for specialist items, this enables contractors to literally 'box off' projects. Stackability is no issue and is compatible with most of the existing barriers available on the market. A 455mm mesh topping is available to an overall height of 1m. This barrier is an alternative to the 1.0m Evo Barrier and is compatible with the Mini Mesh Panel.



Code	Description	Length	Height	Width	Weight	W.Ballast
<b>T2MBRY</b>	Pyramid Barrier	1000mm	560mm	400mm	5.00kg	55.00kg

## Novus Barrier

Made from prime UV stabilised MDPE, the Novus Barrier is an excellent option for creating a safe, highly visible temporary working area or site. It is robust and adaptable and when used with mesh panels for added height, it provides a secure division between workers, vehicles, pedestrians and hazardous zones. The Novus is available in various colours and has the option of adding reflective strips for increased visibility.



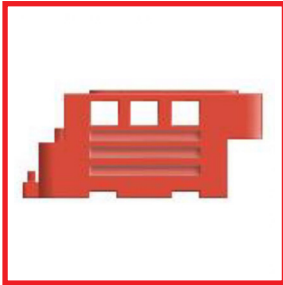
Code	Description	Length	Height	Width	Weight	W.Ballast
<b>T2MBNB</b>	Novus Barrier	2000mm	800mm	520mm	25.00kg	180.00kg
<b>T2MBNT</b>	Novus Mesh Top	-	-	-	-	-



# Traffic Management Barriers

## RB2000 Barrier

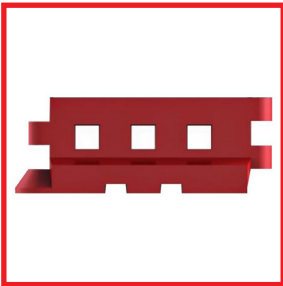
For complete road, site safety and security a 1m high heavy duty low level containment barrier. Its five-position unlocking system makes it highly flexible and it flows around corners and uneven surfaces. Constructed in UV stabilized prime polyethylene it weighs up to 400kg when filled to create a solid secure system. Anti-climb mesh and hoarding panels can be added to increase height and security. Compatible with Infill, pedestrian gate and vehicle gate. Front and end stops to prevent trip hazard and improve pedestrian safety.



Code	Description	Length	Height	Width	Weight	W.Ballast
RB2000	RB2000 Barrier	1650mm	1000mm	400mm	35.00kg	400.00kg

## GB2 Barrier

Ideal product for highway or site delineation for pedestrian & vehicle safety. A robust heavy duty adaptable barrier system suitable for low level demarcation. This barrier has a 2 metre working length and height of 0.9 metre with a pin locking device which allows each barrier to have a 35 degree configuration to adapt to angles and curves. Fully stackable for transport and storage. Anti-climb mesh and hoarding panels can be added to increase height and security.

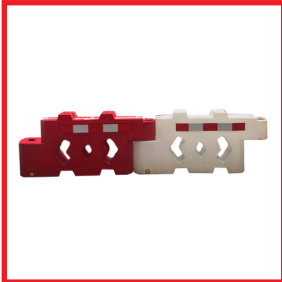


Code	Description	Length	Height	Width	Weight	W.Ballast
T2MGB2	GB2 Barrier	2000mm	900mm	500mm	32.00kg	350.00kg

# Traffic Management Barriers

## Bison Barrier

The Bison Barrier is a water filled barrier ideal for designating safe routes for pedestrians and vehicles. Fully stackable with an anti-slide feature for transportation and storage. Available in red and white with Chapter 8 compliant reflective strips fitted as standard for greater visibility & safety. Designed using a pin locking system which allows a 90-degree angle between barriers so that multiple configurations can be created to suit site constraints which makes it the ideal product for inner city projects where space is at a premium. Solid hoard or mesh panels can be added to the top of these barriers to increase security.



Code	Description	Length	Height	Width	Weight	W.Ballast
<b>T2MBIS</b>	Bison Barrier	2000mm	1000mm	400mm	-	-

## RB22 Barrier - Crash Tested

One piece moulded crash barrier system that will bring a car to a controlled stop. Crash tested whilst free standing at 50Mph (80KMph) to conform with BS EN1317-N1. Reusable after impact if not punctured/damaged. Lighter, looks better and easier to transport than concrete equivalent and does not require heavy equipment required to load/unload and assemble. Easy to lock together in formation with quick secure pin hinge set on two flat, screw fitted, steel plates for strength, speed and ease of assembly.



Code	Description	Length	Height	Width	Weight	W.Ballast
<b>T2MR22</b>	RB22 Barrier	2000mm	800mm	500mm	60.00kg	600.00kg

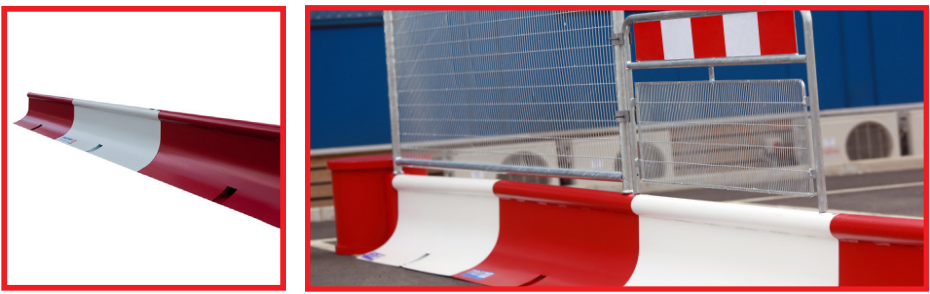




# Traffic Management Barriers

## Mass Barrier

Traffic Management Safety System is a high visibility safety solution and ensures a stable secure connection. It is the basis of this system and its versatility allows it to be used in many applications. The system has been fully tested providing protection to work force, vehicle drivers as well as pedestrians.



The base unit is a steel barrier consisting of hot dip galvanised elements, powder coated in highly visible safety colours. Individual base units are 150cm long x 50cm wide x 42cm high and weigh 48kg. Each unit links together via vertical pins. The various top sections can be added as specific jobs demand. Specially adapted units enable the system to rotate through 180°.



Code	Description	Length	Height	Width	Weight
MG100R	Mass Barrier - Red	1500mm	420mm	500mm	48kg
MG100W	Mass Barrier - White	1500mm	420mm	500mm	48kg





## Find Your Nearest Branch:

Simply scan the QR code and input your postcode by clicking on 'Find your local branch'; our website will then show the nearest branch to your location.



**Altrad Generation Dublin West**  
Killeen Road, Bluebell,  
Dublin,  
D12 KXE6  
Tel. +353 1 601 1500  
[dublinwest@altradgeneration.com](mailto:dublinwest@altradgeneration.com)

**Altrad Generation Cork**  
Watergrasshill Business Park,  
Watergrasshill, Co. Cork,  
T56 AE06  
Tel. +353 21 488 9850  
[cork@altradgeneration.com](mailto:cork@altradgeneration.com)

**Altrad Generation Dublin North**  
Old Swords Road, Cloghran, Santry,  
Dublin 9,  
K67 P2T8  
Tel. +353 1 901 8690  
[dublinnorth@altradgeneration.com](mailto:dublinnorth@altradgeneration.com)



**GENERATION  
HIRE & SALE**

**Altrad Generation Galway**  
Airglorney Business Park,  
Tuam, Co. Galway,  
H54 YT98  
Tel. +353 93 60470  
[galway@altradgeneration.com](mailto:galway@altradgeneration.com)

**Altrad Generation Belfast**  
Unit 3B, Nutts Corner Business Park,  
Belfast,  
BT29 4SR  
Tel. 028 9082 4880  
[belfast@altradgeneration.com](mailto:belfast@altradgeneration.com)